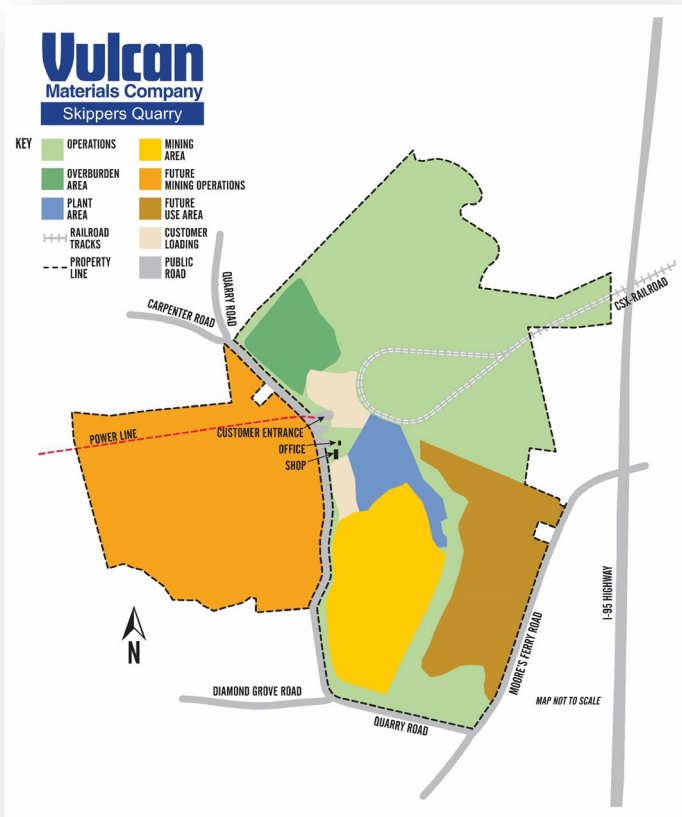


# Our Commitment to You

We are committed to investing in Greensville County by creating and supporting jobs and economic opportunity while operating safely, reliably and in an environmentally responsible manner. We will continue to meet or exceed local, state and federal laws and regulations proven to protect our people, community and the environment.



SKIPPERS QUARRY

# REACHING HIGHER

OUR COMMITMENT TO YOU



We are committed to being a responsible neighbor and working together. We will post regular updates to our website and keep our neighbors informed. Please contact our 24/7 community line at (434) 326-5589 or [vmcSkippersCommunity@vmcmail.com](mailto:vmcSkippersCommunity@vmcmail.com) if you have questions, comments or feedback.

Vulcan Materials Company | Skippers Quarry  
1459 Quarry Road | Skippers, VA 23879

[www.VulcanSkippersQuarry.com](http://www.VulcanSkippersQuarry.com)

**Vulcan**  
Materials Company  
Skippers Quarry

**Vulcan**  
Materials Company  
Skippers Quarry

# Committed to You & Greenville County

We call it Doing The Right Thing, The Right Way, At The Right Time - this is **The Vulcan Way**. Since 1920, Skippers Quarry has been an important economic engine for Greenville County.

We make the construction aggregates that help grow and sustain communities while forming the building blocks for the region's roads, bridges, homes, hospitals, schools, office buildings and places of worship. As a top 20 major manufacturing employer in the area, we help support the County's economic and employment base.

## Snapshot

**1920**  
operations started

**40**  
employees

**\$2.7 million+**  
annual wages & benefits paid

**\$10.6 million**  
annual average investment  
operational & capital expenses

**\$1 million+**  
annual spend with Greenville  
County businesses/organizations

**\$200,000+**  
contributions & donations to local  
schools and organizations since 2016

**19**  
employees and retirees live in  
Greenville County

**\$326,000+**  
property taxes paid to fund local  
education and services (2020)

**1.5 million tons**  
average annual production

## Our Commitments



Meet/exceed local, state and federal laws & regulations



Preserve and protect local water resources



Industry-leading safety performance



Maintain controls & procedures to protect the air



Wildlife Habitat Council certified program since 2010



Vegetated berms and buffer areas surround the site

# We Make Big Rocks Into Small Rocks

What we do is simple. But it has to be done The Right Way.



**Engineers** design mine plans which serve as the blueprints for the entire operation. Our **inventory** is the rock in the ground. It is mined at a rate based on **customer demand** which is largely tied to the economy.



Using the mine plans, **licensed and trained technicians**, adhering to specific depths and patterns, drill holes into the rock.



We **safely and precisely** remove a specific amount of rock from the ground through highly controlled blasts that last less than a second.

Loader and haul truck **drivers** transfer the rock to the primary crusher, to make smaller rocks.

The rock is transported via a **conveyor** to the processing plant where it is processed, sized and sorted to meet customer **specifications**.



Product is **shipped** via CSX rail and local customer trucks.



Trucks travel through a wheel wash, are weighed, ticketed and tarped before traveling to job sites and **customers** for use in homes, businesses, roads and bridges.

## Construction aggregates drive our economy. How much rock do we need?

# 38,000 tons

builds one lane-mile of a  
four-lane interstate highway

# 400 tons

builds the  
average home

# 94%

amount of aggregate  
in asphalt pavement

# 80%

amount of aggregate  
in concrete